

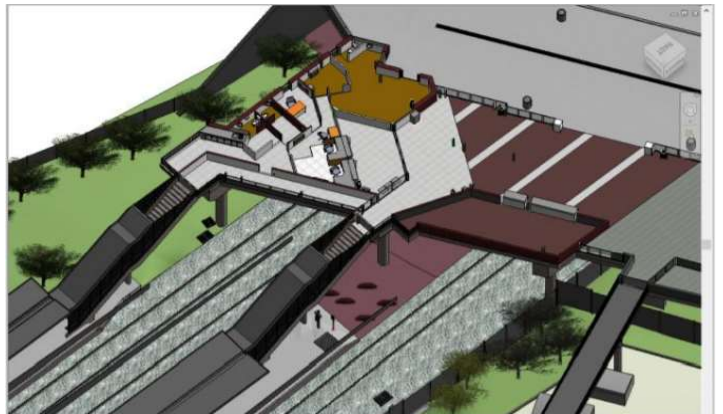
BIM model of the existing for infrastructure work

As part of improving access to platforms for people with reduced mobility and the creation of elevators, AREP Lyon commissioned Eurosia for the 3D survey, LOD 300 modeling and the production of drawings for Vénissieux station, as well as all the docks.

The project also brought together teams from SNCF Gares & Connexions and SNCF networks.

Our solutions

- 3D scanner survey by a cadastral surveyor partners
- Modelling of all-batches model in LOD 300
- Realization of the topographical, buildings and platforms drawings according to the client's AutoCad template
- Establishment of a collaboration tool to facilitate exchanges



INVESTOR:
GENERAL CONTRACTOR:
COMPANY:
LOCATION: VENISSIEUX (FR)
SURFACE: 8700m²
AMOUNT:
DATE OF ISSUE: 2020

ORDER:

- Scan to BIM
- LOD 300 modeling
- Drawingd

CLIENT: AREP Lyon